



WORLD WIDE SIRES

SIRE DIRECTORY



WORLD WIDE SIRES, LTD.

HERE FOR YOU.



PLAIN-KNOLL RIX RANGE-ET TR TP TM TC TY TV TL TD TE HH1T HH2T HH3T HH4T HH5T HH6T

RIX X ACURA X RESOLVE

Sire: S-S-I PR REVELATION RIX-ET
Dam: PLAIN-KNOLL 3137 VG-86
3-02 3X 305D 17,368 kgM 4.2% 721 kgF 3.3% 578 kgP
MGS: PINE-TREE ACURA-ET



MGD Plain-Knoll Resolve 1893-ET



4th DAM Plain-Knoll Mogul Mari...

INDEXES

TPI	3235
NM\$	800
CM\$	820
GM\$	713
Feed Efficiency (\$)	250
Feed Saved/Rel. %	-18/49
HHP\$	865
DWP\$	721
WT\$	-56
CW\$	-2

PRODUCTION

PTA Milk (lbs)	1265
PTA Protein (lbs)	49
PTA Protein (%)	0.03
PTA Fat (lbs)	91
PTA Fat (%)	0.14
Production Reliability %	82
Dtrs/Herds	0/0
Combined Fat & Protein	140

TYPE

PTA Type	0.71
Udder Composite	0.98
Feet & Leg Composite	-0.04
Body Weight Composite	0.14
Dairy Composite	-0.15
Type Reliability %	81
Dtrs/Herds	0/0

DAUGHTER FERTILITY

Fertility Index/Rel. %	-1.7/78
DPR/Rel. %	-2.7/78
HCR/Rel. %	-0.6/76
CCR/Rel. %	-2.2/78

MANAGEMENT

Residual Feed Intake/Rel. %	-6/29
SCE/Rel. %	1.3/87
Observations (Service Sire)	212
DCE/Rel. %	1.5/70
Observations (Daughter)	0
Gestation Length/Rel. %	0.5/76
Early First Calving/Rel. %	2.9/75
SSB	3
DSB	3.4
Productive Life/Rel. %	3.4/78
Livability/Rel. %	1.9/73
SCS/Rel. %	2.78/80
Milking Speed/Rel. %	6.95/67

CDCB/HA TYPE TRAITS

Trait	Value	Rel. %	Target
Stature	short	-0.01	tall
Strength	frail	0.23	strong
Body Depth	shallow	-0.01	deep
Dairy Form	tight ribbed	0.15	open ribbed
Rump Width	narrow	0.31	wide
Rump Angle	high pins	0.81	sloped
Rear Leg (side view)	posty	-0.18	sickled
Rear Leg (rear view)	hock-in	0.02	straight
Foot Angle	low angle	0.19	steep angle
Feet & Leg Score	low	-0.07	high
Fore Udder	loose	1.19	strong
Rear Udder Height	low	0.91	high
Rear Udder Width	narrow	1.33	wide
Udder Cleft	weak	0.47	strong
Udder Depth	deep	0.59	shallow
Front Teat Placement	wide	0.51	close
Rear Teat Placement	wide	0.63	close
Teat Length	short	-0.38	long

SIRE FERTILITY

SCR/Rel. %	-0.6/85
------------	---------

	ZOETIS		WELLNESS TRAITS		CDCB	
	Value	Rel. %	Value	Rel. %	Value	Rel. %
	104	68	Mastitis	3.5	75	
	93	70	Retained Placenta	-0.6	73	
	96	65	Metritis	0.1	72	
	105	59	Hypocalcemia/Milk Fever	0.1	63	
	90	57	Ketosis	0.7	71	
	92	62	Lameness			
	98	54	Displaced Abomasum	0.5	75	
	97	54	Cow Respiratory Disease			
	93	45	Cow Abortion			
	102	65	Twinning			
	104	31	Cystic Ovary			
	N/A	N/A	Heifer Livability	0	63	
	101	56	Calf Respiratory Disease			
	103	58	Calf Scours			
	93	61	Calf Livability			

CRUCIATE

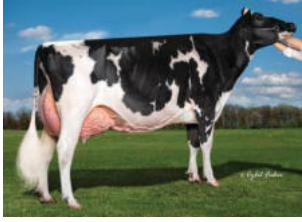
7H017335
HO840003267428722

Born On: June 28, 2023
Beta-casein: A1A2
Kappa-casein: BB
EFI: 10.8%



BADGER SIEMERS CRUCIATE-ET TR TP TM TC TY TV TL TD TE HH1T HH2T HH3T HH4T HH5T HH6T
EASTON X BIGSHOT X BARCELONA

Sire: PINE-TREE EASTON-ET
Dam: RMD-DOTTERER BSHOT 17798-ET
MGS: T-SPRUCE RENEGAD BIGSHOT-ET



MGGD Pine-Tree 9839 Fraz 7613-...



4th DAM Endco Yoder L7933 983...

INDEXES

TPI	3232
NM\$	719
CM\$	748
GM\$	706
Feed Efficiency (\$)	227
Feed Saved/Rel. %	4/47
HHP\$	803
DWP\$	655
WT\$	-121
CW\$	-6

PRODUCTION

PTA Milk (lbs)	1041
PTA Protein (lbs)	48
PTA Protein (%)	0.05
PTA Fat (lbs)	78
PTA Fat (%)	0.13
Production Reliability %	81
Dtrs/Herds	0/0
Combined Fat & Protein	126

TYPE

PTA Type	1.03
Udder Composite	0.15
Feet & Leg Composite	0.47
Body Weight Composite	0.37
Dairy Composite	1.00
Type Reliability %	79
Dtrs/Herds	0/0

DAUGHTER FERTILITY

Fertility Index/Rel. %	0.9/75
DPR/Rel. %	0.7/75
HCR/Rel. %	0.5/76
CCR/Rel. %	0.9/75

MANAGEMENT TRAITS

Residual Feed Intake/Rel. %	-65/28
SCE/Rel. %	1.3/63
Observations (Service Sire)	0
DCE/Rel. %	1.5/61
Observations (Daughter)	0
Gestation Length/Rel. %	1.2/73
Early First Calving/Rel. %	1.9/72
SSB	4
DSB	3.5
Productive Life/Rel. %	3.7/76
Livability/Rel. %	-1.9/73
SCS/Rel. %	2.77/76
Milking Speed/Rel. %	6.98/60

CDCB/HA TYPE TRAITS

Trait	Value	Rel. %	Visual
Stature	short	1.09	tall
Strength	frail	0.71	strong
Body Depth	shallow	1.05	deep
Dairy Form	tight ribbed	1.40	open ribbed
Rump Width	narrow	1.08	wide
Rump Angle	high pins	-0.21	sloped
Rear Leg (side view)	posty	1.32	sickled
Rear Leg (rear view)	hock-in	0.52	straight
Foot Angle	low angle	0.42	steep angle
Feet & Leg Score	low	0.77	high
Fore Udder	loose	0.37	strong
Rear Udder Height	low	0.30	high
Rear Udder Width	narrow	0.29	wide
Udder Cleft	weak	0.83	strong
Udder Depth	deep	0.29	shallow
Front Teat Placement	wide	0.95	close
Rear Teat Placement	wide	1.08	close
Teat Length	short	0.82	long

	ZOETIS		WELLNESS TRAITS	CDCB		
	Value	Rel. %		Value	Rel. %	
	98	67	Mastitis	2.5	72	
	97	69	Retained Placenta	0.6	70	
	103	63	Metritis	1.3	69	
	81	56	Hypocalcemia/Milk Fever	0	61	
	92	53	Ketosis	0.2	68	
	92	61	Lameness			
	100	50	Displaced Abomasum	0.6	71	
	100	52	Cow Respiratory Disease			
	102	44	Cow Abortion			
	103	63	Twinning			
	104	29	Cystic Ovary			
	N/A	N/A	Heifer Livability	0	62	
	96	56	Calf Respiratory Disease			
	96	57	Calf Scours			
	103	62	Calf Livability			



CLEAR-ECHO MAX MASHAK-ET TR TP TC TY TV TL TD TE HH1T HH2T HH3T HH4T HH5T HH6T

MAXIMUS X TAHITI X JEDI

Sire: RMD-DOTTERER SSI MAXIMUS-ET
Dam: CLEAR-ECHO TAHITI 4639-ET VG-86
3-03 3X 317D 14,238 kgM 4.1% 584 kgF 3.1% 444 kgP
MGS: DE-SU FRAZZ TAHITI 14104-ET

Daughter Average:
12,302 kgM 550 kgF 4.50%F 411 kgP 3.30%P



Lars-Acres Mashak Nato



MGGD Clear-Echo Tatum 3326-ET

INDEXES

TPI	3064
NM\$	674
CM\$	673
GM\$	665
Feed Efficiency (\$)	208
Feed Saved/Rel. %	363/61
HHP\$	492
DWP\$	714
WT\$	31
CW\$	23

PRODUCTION

PTA Milk (lbs)	1193
PTA Protein (lbs)	33
PTA Protein (%)	-0.02
PTA Fat (lbs)	57
PTA Fat (%)	0.03
Production Reliability %	99
Dtrs/Herds	2081/112
Combined Fat & Protein	90

TYPE

PTA Type	0.87
Udder Composite	1.65
Feet & Leg Composite	-0.23
Body Weight Composite	-1.99
Dairy Composite	-0.65
Type Reliability %	95
Dtrs/Herds	170/33

DAUGHTER FERTILITY

Fertility Index/Rel. %	-0.1/95
DPR/Rel. %	-1.3/95
HCR/Rel. %	0.9/95
CCR/Rel. %	-0.1/94

MANAGEMENT

Residual Feed Intake/Rel. %	-40/39
SCE/Rel. %	1.3/99
Observations (Service Sire)	6390
DCE/Rel. %	1.4/92
Observations (Daughter)	731
Gestation Length/Rel. %	0.5/99
Early First Calving/Rel. %	3.8/84
SSB	3
DSB	3.2
Productive Life/Rel. %	2.9/90
Livability/Rel. %	0.1/77
SCS/Rel. %	2.89/98
Milking Speed/Rel. %	6.94/97

SIRE FERTILITY

SCR/Rel. %	1.1/98
------------	--------

CDCB/HA TYPE TRAITS

Trait	Value	Rel. %	Target
Stature	short	0.33	tall
Strength	frail	-1.64	strong
Body Depth	shallow	-0.80	deep
Dairy Form	tight ribbed	1.61	open ribbed
Rump Width	narrow	-0.37	wide
Rump Angle	high pins	0.00	sloped
Rear Leg (side view)	posty	-0.63	sickled
Rear Leg (rear view)	hock-in	-0.41	straight
Foot Angle	low angle	0.78	steep angle
Feet & Leg Score	low	-0.11	high
Fore Udder	loose	1.72	strong
Rear Udder Height	low	2.52	high
Rear Udder Width	narrow	1.30	wide
Udder Cleft	weak	0.51	strong
Udder Depth	deep	1.39	shallow
Front Teat Placement	wide	1.49	close
Rear Teat Placement	wide	1.47	close
Teat Length	short	-0.68	long

	ZOETIS		WELLNESS TRAITS		CDCB	
	Value	Rel. %	Value	Rel. %	Value	Rel. %
	101	90	Mastitis	-0.7	85	
	93	94	Retained Placenta	-0.6	89	
	102	93	Metritis	-0.2	88	
	84	89	Hypocalcemia/Milk Fever	0.1	75	
	96	84	Ketosis	-1.8	86	
	102	83	Lameness			
	98	75	Displaced Abomasum	0	89	
	99	85	Cow Respiratory Disease			
	99	63	Cow Abortion			
	95	93	Twinning			
	96	41	Cystic Ovary			
	N/A	N/A	Heifer Livability	0.6	68	
	102	96	Calf Respiratory Disease			
	106	96	Calf Scours			
	97	97	Calf Livability			



T-SPRUCE MASHAK MAYHEM-ET TR TP TM TC TY TV TL TD TE HH1T HH2T HH3T HH4T HH5T HH6T

MASHAK X TAOS X LIONEL

Sire: CLEAR-ECHO MAX MASHAK-ET
Dam: T-SPRUCE TAOS 15384-ET
MGS: LEANINGHOUSE TAOS-ET



MGGD Endco Yoder L7933 9839-ET

INDEXES

TPI	3059
NM\$	602
CM\$	582
GM\$	572
Feed Efficiency (\$)	163
Feed Saved/Rel. %	91/49
HHP\$	547
DWP\$	636
WT\$	-19
CW\$	12

PRODUCTION

PTA Milk (lbs)	2057
PTA Protein (lbs)	47
PTA Protein (%)	-0.07
PTA Fat (lbs)	40
PTA Fat (%)	-0.16
Production Reliability %	82
Dtrs/Herds	0/0
Combined Fat & Protein	87

TYPE

PTA Type	0.80
Udder Composite	1.19
Feet & Leg Composite	0.16
Body Weight Composite	-0.65
Dairy Composite	-0.56
Type Reliability %	80
Dtrs/Herds	0/0

DAUGHTER FERTILITY

Fertility Index/Rel. %	0.5/78
DPR/Rel. %	-0.6/78
HCR/Rel. %	1.3/76
CCR/Rel. %	1.0/78

CDCB/HA TYPE TRAITS

Trait	Value	Rel. %	Target
Stature	short	0.35	tall
Strength	frail	-0.61	strong
Body Depth	shallow	-0.59	deep
Dairy Form	tight ribbed	0.46	open ribbed
Rump Width	narrow	-0.16	wide
Rump Angle	high pins	0.46	sloped
Rear Leg (side view)	posty	-0.09	sickled
Rear Leg (rear view)	hock-in	0.13	straight
Foot Angle	low angle	0.40	steep angle
Feet & Leg Score	low	0.24	high
Fore Udder	loose	1.69	strong
Rear Udder Height	low	1.85	high
Rear Udder Width	narrow	1.16	wide
Udder Cleft	weak	-0.58	strong
Udder Depth	deep	1.17	shallow
Front Teat Placement	wide	0.11	close
Rear Teat Placement	wide	-0.23	close
Teat Length	short	-0.01	long

MANAGEMENT

Residual Feed Intake/Rel. %	14/30
SCE/Rel. %	1.3/81
Observations (Service Sire)	72
DCE/Rel. %	1.3/70
Observations (Daughter)	0
Gestation Length/Rel. %	0.4/76
Early First Calving/Rel. %	2.4/74
SSB	3
DSB	3.2
Productive Life/Rel. %	4.0/77
Livability/Rel. %	0.3/73
SCS/Rel. %	2.98/79
Milking Speed/Rel. %	7.29/64

	ZOETIS		WELLNESS TRAITS	CDCB	
	Value	Rel. %		Value	Rel. %
	97	70	Mastitis	-1.1	74
	97	72	Retained Placenta	0	72
	106	67	Metritis	0.7	71
	90	61	Hypocalcemia/Milk Fever	0	63
	102	58	Ketosis	0	71
	102	65	Lameness		
	97	55	Displaced Abomasum	0.2	74
	95	58	Cow Respiratory Disease		
	106	48	Cow Abortion		
	95	67	Twinning		
	97	30	Cystic Ovary		
	N/A	N/A	Heifer Livability	0.7	63
	101	57	Calf Respiratory Disease		
	96	58	Calf Scours		
	104	62	Calf Livability		

LILSMOOTH-P

7H016261
HO840003229291404

Born On: July 09, 2021
Beta-casein: A2A2
Kappa-casein: AB
EF1: 10.8%
aAa: 243

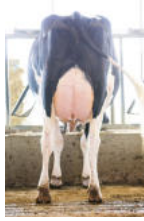
SIEMERS BED LILSMOOTH-P-ET TR PC TC TY TV TL TD TE HH1T HH2T HH3T HH4T HH5T HH6T

BEDROCK-PP X LEGACY X DELTA-LAMBDA

Sire: S-S-I LIMLGH T BEDROCK-PP-ET
Dam: SIEMERS LGCY PARIS 31379-ET VG-87
5-02 3X 349D 17,822 kgM 4.7% 830 kgF 3.6% 645 kgP
MGS: PINE-TREE CW LEGACY-ET



DAM Siemers Lgcy Paris 31379-ET



MGD Siemers Lmda Paris 27856-ET



MGGD Siemers Denver Paris-ET

INDEXES

TPI	2976
NM\$	474
CM\$	493
GM\$	455
Feed Efficiency (\$)	103
Feed Saved/Rel. %	28/49
HHP\$	518
DWP\$	547
WT\$	107
CW\$	37

PRODUCTION

PTA Milk (lbs)	407
PTA Protein (lbs)	21
PTA Protein (%)	0.03
PTA Fat (lbs)	34
PTA Fat (%)	0.06
Production Reliability %	85
Dtrs/Herds	0/0
Combined Fat & Protein	55

TYPE

PTA Type	0.66
Udder Composite	0.98
Feet & Leg Composite	0.07
Body Weight Composite	-0.13
Dairy Composite	-0.14
Type Reliability %	82
Dtrs/Herds	0/0

DAUGHTER FERTILITY

Fertility Index/Rel. %	1.5/78
DPR/Rel. %	0.4/78
HCR/Rel. %	2.0/78
CCR/Rel. %	2.1/78

MANAGEMENT TRAITS

Residual Feed Intake/Rel. %	-7/30
SCE/Rel. %	1.7/95
Observations (Service Sire)	870
DCE/Rel. %	1.9/77
Observations (Daughter)	2
Gestation Length/Rel. %	-1.5/76
Early First Calving/Rel. %	3.0/75
SSB	4
DSB	3.3
Productive Life/Rel. %	3.9/79
Livability/Rel. %	1.2/75
SCS/Rel. %	2.64/80
Milking Speed/Rel. %	6.52/65

SIRE FERTILITY

SCR/Rel. %	0.1/91
------------	--------

CDCB/HA TYPE TRAITS

Trait	Value	Rel. %	Target
Stature	short	0.48	tall
Strength	frail	-0.16	strong
Body Depth	shallow	-0.13	deep
Dairy Form	tight ribbed	0.60	open ribbed
Rump Width	narrow	0.97	wide
Rump Angle	high pins	1.81	sloped
Rear Leg (side view)	posty	-0.74	sickled
Rear Leg (rear view)	hock-in	-0.01	straight
Foot Angle	low angle	0.21	steep angle
Feet & Leg Score	low	0.24	high
Fore Udder	loose	1.17	strong
Rear Udder Height	low	1.34	high
Rear Udder Width	narrow	1.17	wide
Udder Cleft	weak	0.42	strong
Udder Depth	deep	0.92	shallow
Front Teat Placement	wide	0.38	close
Rear Teat Placement	wide	0.74	close
Teat Length	short	-0.88	long

	ZOETIS		WELLNESS TRAITS	CDCB	
	Value	Rel. %		Value	Rel. %
	108	71	Mastitis	2.5	75
	102	73	Retained Placenta	0.3	72
	107	68	Metritis	0.5	72
	92	63	Hypocalcemia/Milk Fever	0	63
	100	60	Ketosis	0.3	71
	92	66	Lameness		
	96	57	Displaced Abomasum	0.1	74
	93	59	Cow Respiratory Disease		
	98	52	Cow Abortion		
	92	68	Twinning		
	103	34	Cystic Ovary		
	N/A	N/A	Heifer Livability	0.7	64
	99	57	Calf Respiratory Disease		
	104	58	Calf Scours		
	106	62	Calf Livability		

TITANIUM

614HO15558
HO840003215097686

Born On: June 11, 2020
Beta-casein: A1A2
Kappa-casein: BE
EFI: 11.0%
aAa: 435



WILRA SSI 1622 TITANIUM-ET TR TP TC TY TV TL TD TE HH1T HH2T HH3T HH4T HH5T HH6T

MAXIMUS X MEDLEY X DELTA

Sire: RMD-DOTTERER SSI MAXIMUS-ET
Dam: WILRA MEDLEY 1622-ET
MGS: ABS MEDLEY-ET

Daughter Average:
12,867 kgM 545 kgF 4.20%F 416 kgP 3.20%P



INDEXES

TPI	2956
NM\$	681
CM\$	668
GM\$	674
Feed Efficiency (\$)	181
Feed Saved/Rel. %	380/58
HHP\$	555
DWP\$	741
WT\$	122
CW\$	-10

DAUGHTER FERTILITY

Fertility Index/Rel. %	0.9/88
DPR/Rel. %	-0.5/88
HCR/Rel. %	2.1/86
CCR/Rel. %	1.6/88

MANAGEMENT

Residual Feed Intake/Rel. %	-40/38
SCE/Rel. %	1.3/83
Observations (Service Sire)	155
DCE/Rel. %	1.4/76
Observations (Daughter)	96
Gestation Length/Rel. %	-0.3/96
Early First Calving/Rel. %	2.1/81
SSB	4
DSB	3.1
Productive Life/Rel. %	4.3/88
Livability/Rel. %	2.0/77
SCS/Rel. %	2.90/92
Milking Speed/Rel. %	7.25/77

PRODUCTION

PTA Milk (lbs)	1625
PTA Protein (lbs)	38
PTA Protein (%)	-0.05
PTA Fat (lbs)	37
PTA Fat (%)	-0.11
Production Reliability %	96
Dtrs/Herds	209/24
Combined Fat & Protein	75

TYPE

PTA Type	-0.83
Udder Composite	0.09
Feet & Leg Composite	0.09
Body Weight Composite	-2.09
Dairy Composite	-1.78
Type Reliability %	88
Dtrs/Herds	53/11

CDCB/HA TYPE TRAITS

Stature	short	-2.32	tall
Strength	frail	-1.81	strong
Body Depth	shallow	-1.75	deep
Dairy Form	tight ribbed	-0.18	open ribbed
Rump Width	narrow	-1.17	wide
Rump Angle	high pins	0.45	sloped
Rear Leg (side view)	posty	-0.35	sickled
Rear Leg (rear view)	hock-in	-0.36	straight
Foot Angle	low angle	-0.77	steep angle
Feet & Leg Score	low	-0.38	high
Fore Udder	loose	-0.68	strong
Rear Udder Height	low	0.39	high
Rear Udder Width	narrow	0.44	wide
Udder Cleft	weak	-0.73	strong
Udder Depth	deep	-1.55	shallow
Front Teat Placement	wide	0.08	close
Rear Teat Placement	wide	-0.28	close
Teat Length	short	-1.26	long

	ZOETIS		WELLNESS TRAITS	CDCB	
	Value	Rel. %		Value	Rel. %
	105	73	Mastitis	1.1	77
	97	76	Retained Placenta	-0.2	75
	106	72	Metritis	0.9	75
	92	67	Hypocalcemia/Milk Fever	0.2	66
	98	64	Ketosis	-0.3	74
	99	68	Lameness		
	104	61	Displaced Abomasum	0.3	78
	98	61	Cow Respiratory Disease		
	97	55	Cow Abortion		
	93	71	Twinning		
	100	41	Cystic Ovary		
	N/A	N/A	Heifer Livability	-0.2	69
	99	62	Calf Respiratory Disease		
	96	64	Calf Scours		
	99	67	Calf Livability		



HERE FOR YOU.